

# NanoTrim 400M

## Digital Trimmer BTE 2/4 channel Hearing Aid with nanocoating

### Features:

- Volume control (analog)
- Programmable telecoil
- Memory choice button
- 2/4 channel WDRC
- Up to 4 memories
- TinnyMask - Tinnitus masker

### Non-operational adjustments:

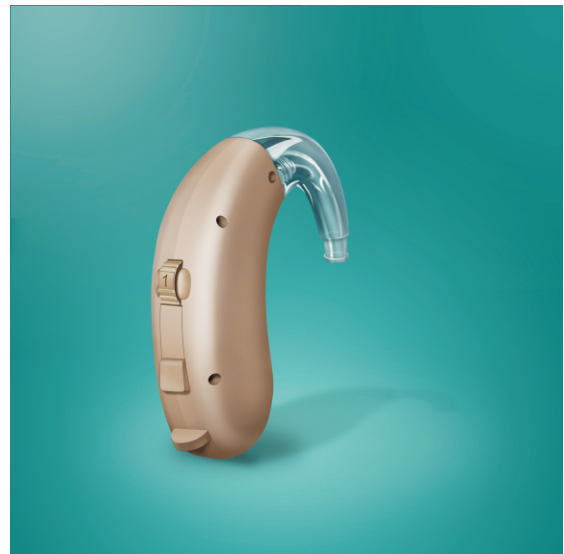
4 trimmers, configurable set of 4 from 44 parameters (the configuration is made by manufacturer)

- AdapTune - Adaptive Feedback Cancellation
- Soft Silence - in-channel squelch to attenuate microphone and circuit noise in quiet environments
- Click Free - Soft acoustic fade between memory change

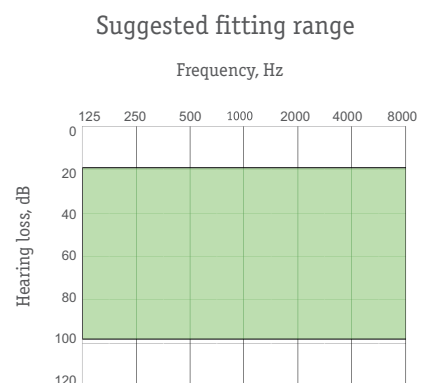
- EVOKElite - Programmable multitone Acoustic Indicators for **Low Battery** and **Power On** events

- EVOKElite - Programmable multitone Acoustic Indicators for **Memory Changes**

- On/Off switch built into battery door
- 3D Plasma technology - Water- and stain resistant nanocoating

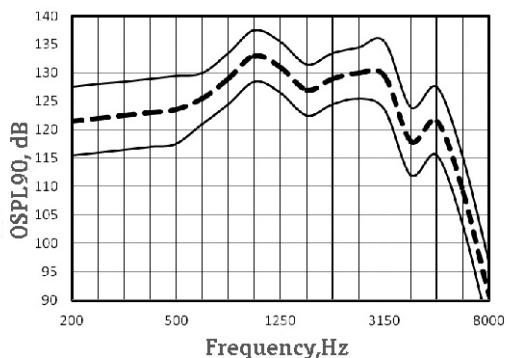


Digital Trimmer 2/4 channel Hearing Aid with analog sound for moderate and severe loss

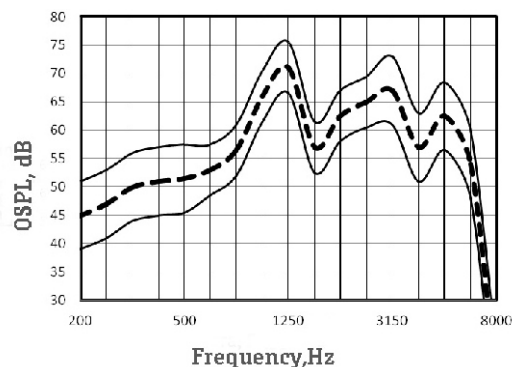


# NanoTrim 400M

OSPL90 Response



OSPL Response



Trimmer controls available:

- Lower Threshold (separately in 4 channels);
- Upper Threshold (separately in 4 channels);
- AGCo Threshold;
- Low Cut Center Frequency;
- High Cut Center Frequency;
- WideBand Gain;
- Peak Clipper Threshold;
- Crossover Frequency;
- Low Level Gain (separately in 4 channels);
- Compression Ratio (separately in 4 channels);
- Squelch Threshold (separately in 4 channels);
- Equalizer 500-7000 Hz;
- Tinnitus-masker: Noise Level.

Main features

In accordance with IEC 60118-7

Full-on-Gain Peak,	dB	71 ± 5
Max Output (OSPL90),	dB	133 ± 4
Frequency Range,	Hz	100-7000
Equivalent Input Noise,	dBA, max	20
Total Harmonic Distortion at RTG,	%, max	4
Maximum Telecoil Sensitivity, FOG input 10 m/A at RTF,	dB	100
WDRC channels		2;4
Memories		4
Battery Current at RTG,	mA, max	1,0
Battery Type		13
Battery Life,	hrs, average	300
Mass w/o battery,	g, max	5