

## Digital Trimmer BTE 4 channel Hearing Aid with nanocoating

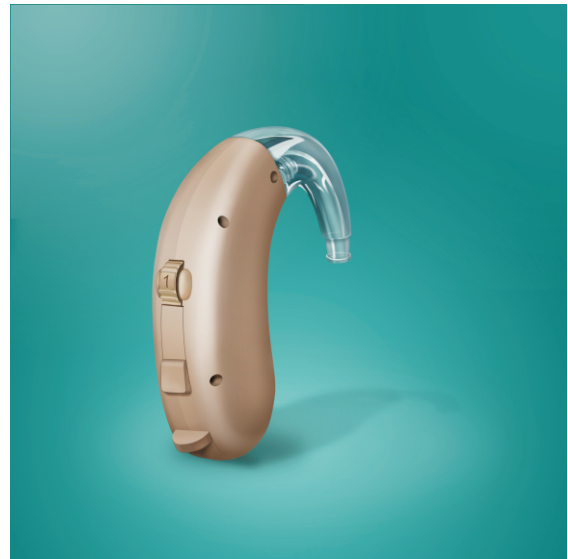
### Features:

- Volume control (analog)
- Programmable telecoil
- Memory choice button
- 4 channel WDRC
- Up to 4 memories
- TinnyMask - Tinnitus masker

### Non-operational adjustments:

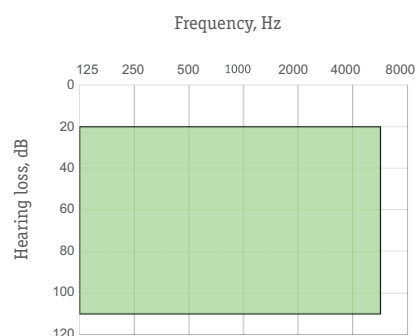
- H - Low Cut Center Frequency
- L - High Cut Center Frequency
- CR - Compression Ratio
- P - AGCo Threshold

- AdapTune - Adaptive Feedback Cancellation
- Soft Silence - in-channel squelch to attenuate microphone and circuit noise in quiet environments
- Click Free - Soft acoustic fade between memory change
- EVOKElite - Programmable multitone Acoustic Indicators for **Low Battery** and **Power On** events
  - EVOKElite - Programmable multitone Acoustic Indicators for **Memory Changes**
- On/Off switch built into battery door
- 3D Plazma technology - Water- and stain resistant nanocoating



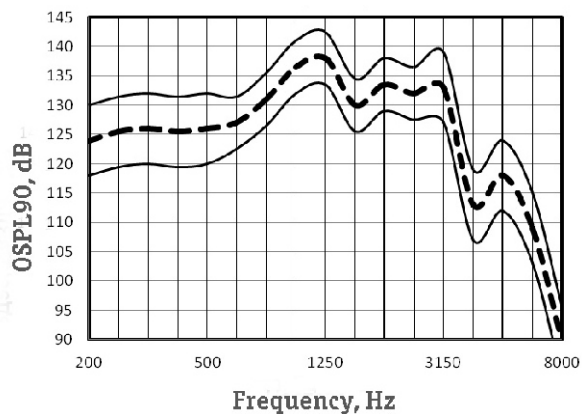
Digital Trimmer 4 channel Hearing Aid with analog sound for moderate and severe loss

### Suggested fitting range

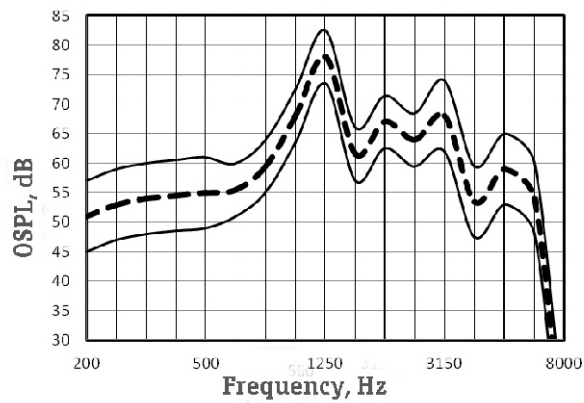


# NanoTrim 300P

OSPL90 Response



OSPL Response



Main features  
In accordance with IEC 60118-7

Full-on-Gain Peak,	dB	78 ± 5
Max Output (OSPL90),	dB	138 ± 4
Frequency Range,	Hz	100-6000
Equivalent Input Noise,	dB(A), max	20
Total Harmonic Distortion at RTG,	%, max	5
Maximum Telecoil Sensitivity, FOG input 10 m/A at RTF,	dB	105
WDRC channels		4
Memories		4
Battery Current at RTG,	mA, max	1,0
Battery Type		13
Battery Life,	hrs, average	300
Mass w/o battery,	g, max	5