

Digital Trimmer BTE 4 channel Hearing Aid with nanocoating

Features:

- Volume control (analog)
- Programmable telecoil
- Memory choice button
- 4 channel WDRC
- Up to 4 memories
- TinnyMask - Tinnitus masker

Non-operational adjustments:

H - Low Cut Center Frequency

P - AGCo Threshold

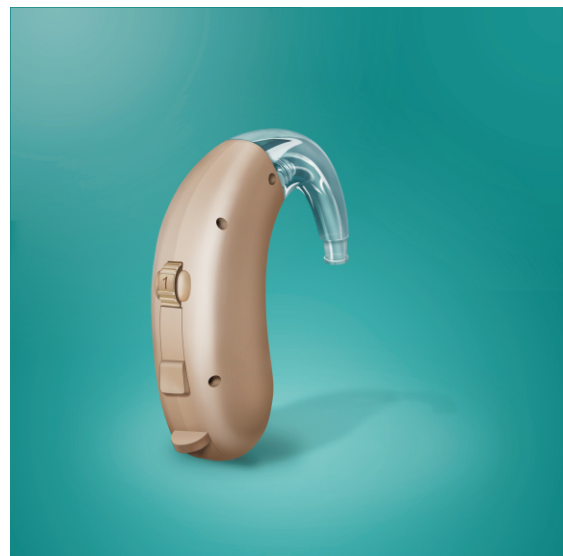
- AdapTune - Adaptive Feedback Cancellation
- Soft Silence - in-channel squelch to attenuate microphone and circuit noise in quiet environments
- Click Free - Soft acoustic fade between memory changes

• EVOKElite - Programmable multitone Acoustic Indicators for **Low Battery** and **Power On** events

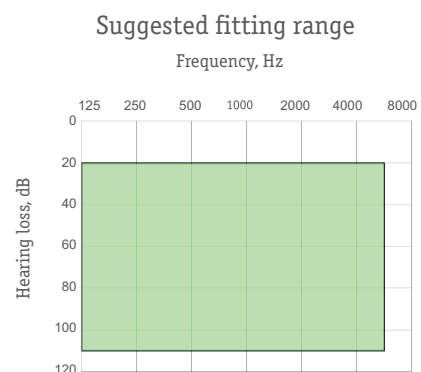
• EVOKElite - Programmable multitone Acoustic Indicators for **Memory Changes**

• On/Off switch built into battery door

• 3D Plasma technology - Water- and stain resistant nanocoating

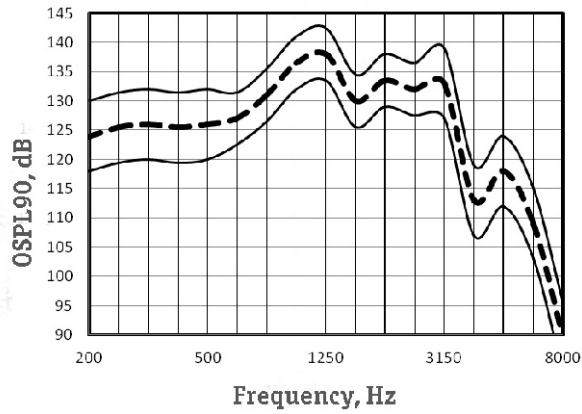


Digital Trimmer4 channel Hearing Aid with analog sound for moderate and severe loss

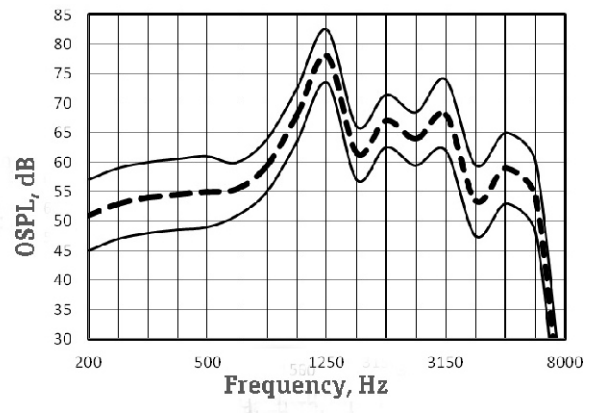


NanoTrim 200P

OSPL90 Response



OSPL Response



Main features In accordance with IEC 60118-7

Full-on-Gain Peak,	dB	78 ± 5
Max Output (OSPL90),	dB	138 ± 4
Frequency Range,	Hz	100-6000
Equivalent Input Noise,	dB(A, max)	20
Total Harmonic Distortion at RTG,	%, max	5
Maximum Telecoil Sensitivity, FOG input 10 m/A at RTE,	dB	105
WDRC channels		4
Memories		4
Battery Current at RTG,	mA, max	1,0
Battery Type		13
Battery Life,	hrs. average	300
Mass w/o battery,	g, max	5