

Digital Trimmer BTE 4 channel Hearing Aid with nanocoating

Features:

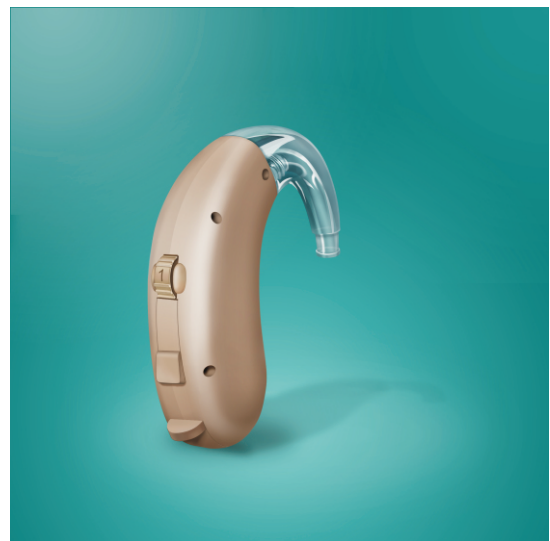
- Volume control (analog)
- Programmable telecoil
- Memory choice button
- 4 channel WDRC
- Up to 4 memories
- TinnyMask - Tinnitus masker

Non-operational adjustments:

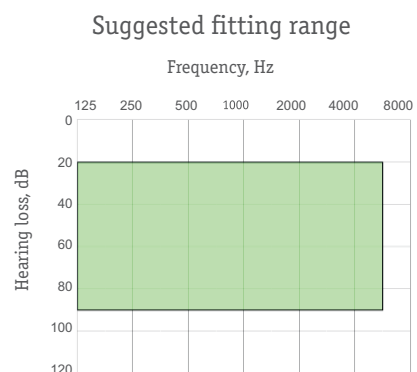
H - Low Cut Center Frequency

CR - Compression Ratio

- AdapTune - Adaptive Feedback Cancellation
- Soft Silence - in-channel squelch
to attenuate microphone and circuit noise
in quiet environments
- Click Free - Soft acoustic fade between memory changes
- EVOKElite - Programmable multitone Acoustic Indicators
for **Low Battery** and **Power On** events
 - EVOKElite - Programmable multitone Acoustic Indicators
for **Memory Changes**
- On/Off switch built into battery door
- 3D Plasma technology - Water- and stain resistant
nanocoating

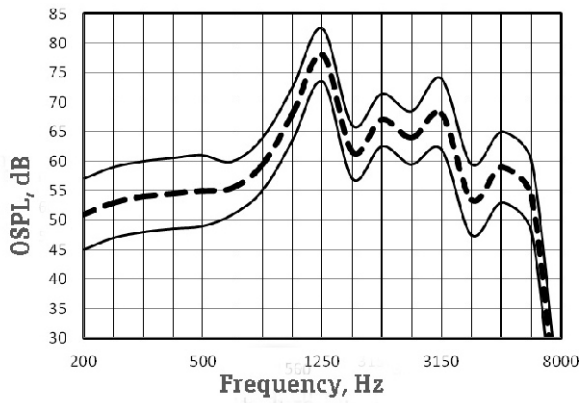


Digital Trimmer 4 channel Hearing Aid with analog sound for mild loss

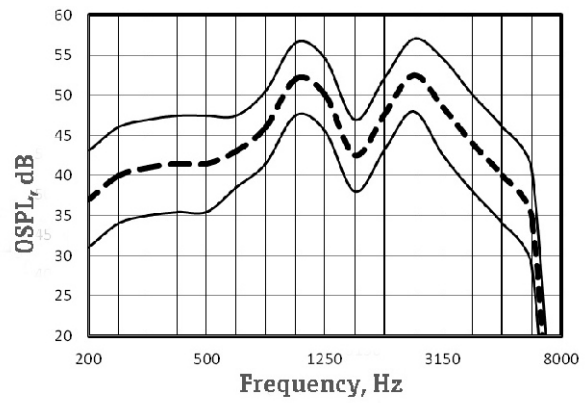


NanoTrim 200S

OSPL90 Response



OSPL Response



Main features In accordance with IEC 60118-7

Full-on-Gain Peak,	dB	52 ± 5
Max Output (OSPL90),	dB	123 ± 4
Frequency Range,	Hz	100-6200
Equivalent Input Noise,	dBA, max	19
Total Harmonic Distortion at RTG,	%, max	4
Maximum Telecoil Sensitivity, FOG input 10 m/A at RTF,	dB	100
WDRC channels		4
Memories		4
Battery Current at RTG,	mA, max	0,7
Battery Type		13
Battery Life,	hrs, average	430
Mass w/o battery,	g, max	5