

## Digital Trimmer BTE 4 channel Hearing Aid with nanocoating

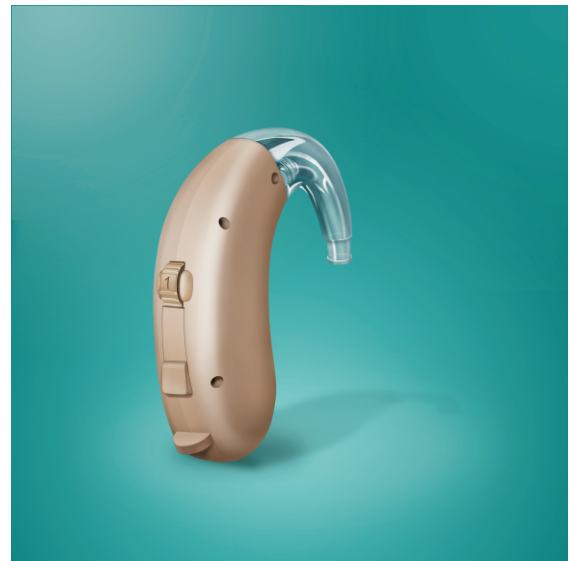
### Features:

- Volume control (analog)
- 4 channel WDRC
- 1memory

### Non-operational adjustments:

H - Low Cut Center Frequency

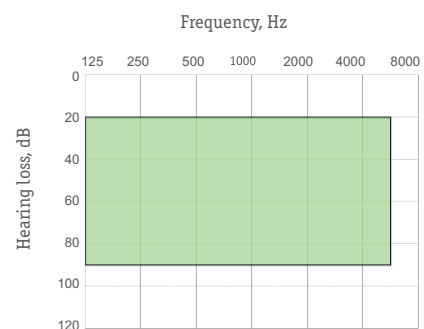
- Soft Silence - in-channel squelch to attenuate microphone and circuit noise in quiet environments



Digital Trimmer 4 channel Hearing Aid with analog sound for mild loss

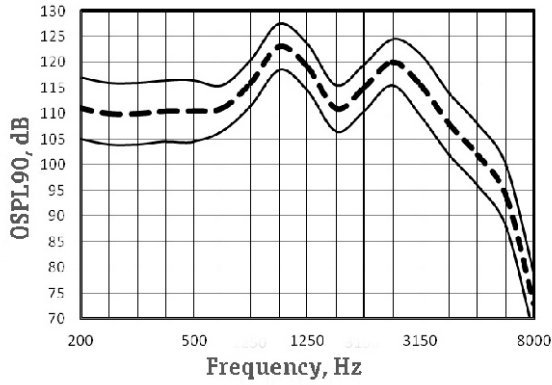
- EVOKELite - Programmable multitone Acoustic Indicators for **Low Battery** and **Power On** events
- On/Off switch built into battery door
- 3D Plazma technology - Water- and stain resistant nanocoating

### Suggested fitting range

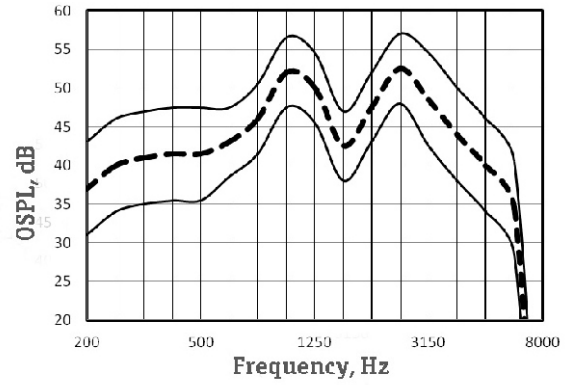


# NanoTrim 100S

OSPL90 Response



OSPL Response



## Main features

In accordance with IEC 60118-7

Full-on-Gain Peak,	dB	$52 \pm 5$
Max Output (OSPL90),	dB	$123 \pm 4$
Frequency Range,	Hz	100-6000
Equivalent Input Noise,	dBA, max	19
Total Harmonic Distortion at RTG,	%, max	4
WDRC channels		4
Memories		1
Battery Current at RTG,	mA, max	0,7
Battery Type		13
Battery Life,	hrs, average	430
Mass w/o battery,	g, max	5