

Digital BTE 2 channel medium power Hearing Aid

Features:

- Volume control
- Memory choice button
- Programmable telecoil
- Audio Input
- 12-band equalizer
- O-T-M switch
- 2 channel WDRC
- Up to 5 memories

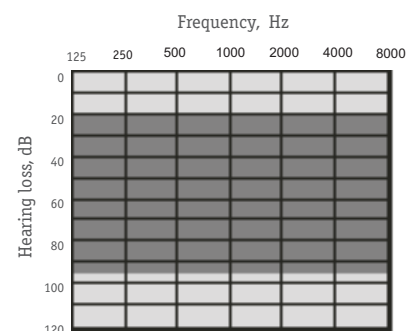
- Advanced Adaptive Feedback Cancelation (Feedback Fighter)
- Low-Level Expansion
- Dynamic Contrast Detection for soft speech enhancing (SpeechKey)

- Input Signals Mixing (MixIn)
- Programmable low battery signals
- Programmable memory change signals



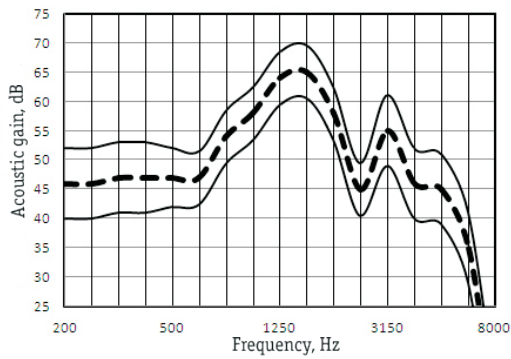
Digital 2-channels Hearing Aid with 5 memories for moderate losses

Suggested fitting range

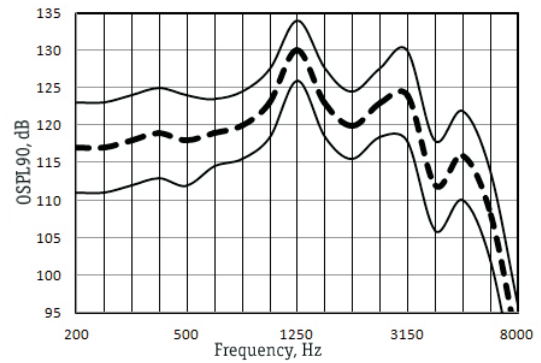


Folk 25M

Full-On-Gain Response



OSPL90 Response



Main features

In accordance with IEC 60118-7 (2 cc coupler)

Full-on-Gain Peak, dB	65±5
Max. Output (OSPL90), dB	130±4
Frequency Range, Hz	50-6300
Equivalent Input Noise, dBA, max	26
Total Harmonic Distortion at RTG, % max	5
Maximum Telecoil Sensitivity, FOG input 10mA/m at RTF, dB	95
WDRC channels	2
Memories	5
Equalizer bands	12
Battery Current at RTG, mA, max	1,0
Battery Type	13
Battery Life, hrs, average	460
Mass w/o battery, g, max	5